



®

Lighting Inc.

## INSTALLATION, OPERATION & MAINTENANCE DATA SHEET

### PGM2 SERIES HID WALL PACK FIXTURES

#### WARNING:

- Read and follow lamp manufacturer's warning and use all information provided before installing /relamping this fixture.
- Disconnect power before installing or servicing.
- Install, operate, and maintain per applicable codes.
- Make sure product meets the intended application. Refer to nameplate for important information.

#### IMPORTANT NOTE:

- Allow 12" minimum supply wire length outside of conduit. Housing conduit size is 1/2".
- Use two 5/16" min. dia bolts (not provided) to mount fixture.
- Plug all unused conduit entries.

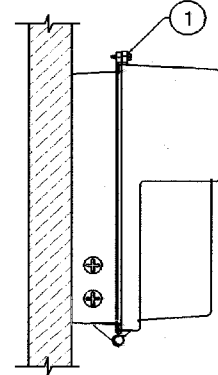


FIG. 1

#### INSTALLATION: (FIG. 1 & 2)

1. Loosen lens retaining screws (1) and remove lens.
2. Loosen reflector screws (2) and remove reflector (3).
3. Drill or knockout two 3/8" holes at boss locations (6) on casting.
4. Locate drill mounting holes using template provided. Mount fixture to wall.  
**NOTE:** To prevent possible entrance of moisture inside enclosure thru mounting bolt holes, use gasket washer or RTV-silicone on mounting screw heads.
5. Loosen raceway cover retaining screw (4) and remove raceway cover (5).
6. Thread conduit to fixture.
7. Make wiring connections using the applicable voltage leads. Place all connections in raceway area.  
**NOTE:** For thru wiring, supply wires to be under reflector. Make supply connections under raceway cover (5). Make sure that unused voltage leads are capped and pushed inside raceway.
8. Replace raceway cover and tighten retaining screw.
9. Replace reflector with large key-hole towards bottom of fixture.
10. Remove clear adhesive cover from reflector and discard. Tighten retaining screws.
11. Install lamp, replace lens and tighten the retaining screws.

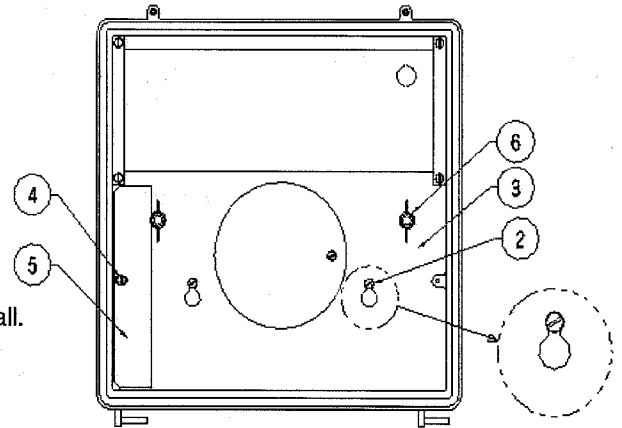
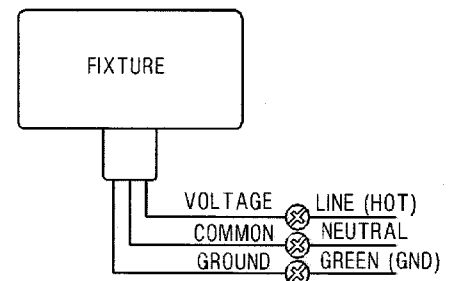


FIG. 2



**TYPICAL WIRING  
DIAGRAM**

