

# SUPERWATT 3D LIGHTING

Cat. #		Approvals
Job	Type	



## APPLICATIONS

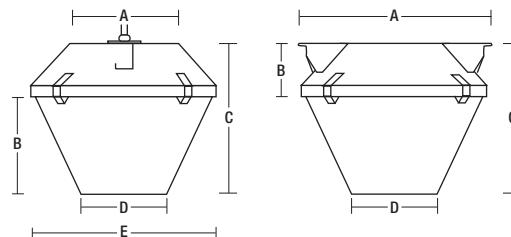
- Medium to high mounting heights in the 15' to 25' range.
- Excellent for lighting assembly areas.

## SPECIFICATIONS

- 2.2:1 spacing-to-mounting height ratio.
- Refractor delivers 95% efficiency, 27% uplight and greatly reduced output in the direct glare zone.
- Pendant or surface mount fixtures available in metal halide up to 400 watts, and up to 350 watt Electro-Reg® ballast system unit.
- 250 or 400 watt high pressure sodium ballasts are also available.
- 40°C is standard on all 250 and 400 watt units.
- Factory installed premium lamp included.

## LISTINGS

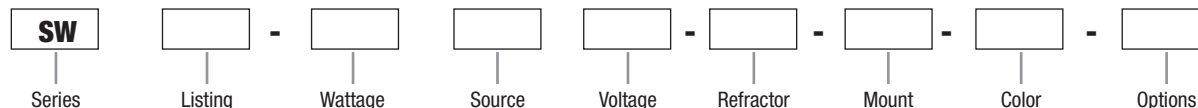
- SWW Series can be ordered NSF certified to NSF Standard C-2, use option **-FP**, minimum 90°C supply conductors.



	A	B	C	D	E
<b>PENDANT MOUNT</b>	13 <sup>1</sup> / <sub>8</sub> "	11 <sup>9</sup> / <sub>16</sub> "	177 <sup>7</sup> / <sub>8</sub> "	10 <sup>1</sup> / <sub>4</sub> "	22 <sup>1</sup> / <sub>2</sub> "
<b>MOUNT</b>	333 mm	294 mm	454 mm	260 mm	571 mm
<b>SURFACE MOUNT</b>	24 <sup>1</sup> / <sub>4</sub> "	6 <sup>15</sup> / <sub>16</sub> "	177 <sup>7</sup> / <sub>8</sub> "	10 <sup>1</sup> / <sub>4</sub> "	
<b>MOUNT</b>	616 mm	176 mm	454 mm	260 mm	

## ORDERING INFORMATION

ORDERING EXAMPLE: SWD-400S8-A-P-WH-QSS



### SERIES

**SW** Superwatt Enclosed HID<sup>1</sup>

### LISTING

**D** Damp Location  
**W** Wet Location

### WATTAGE

**200** 200 watt (pulse start MH only)  
**250** 250 watt (HPS, Electronic)  
**320** 320 watt (pulse start MH, Electronic)  
**350** 350 watt (Electronic)  
**400** 400 watt (pulse start MH, HPS, Electronic)

### SOURCE

**S** High Pressure Sodium  
**P** Pulse Start Metal Halide  
**EB** Electronic Ballast

### VOLTAGE

**2** 208 volt  
**3** 240 volt  
**5** 480 volt  
**6** Tri-Tap® -120/277/347V  
**8** Quad-Tap®  
120/208/240/277V

### REFRACTOR

**A** Acrylic  
**P** Polycarbonate<sup>6</sup>

### MOUNT

**P** Pendant Mount  
**C** Ceiling Mount<sup>2</sup>

### COLOR

**WH** White (standard)  
**GR** Gray (optional)

### OPTIONS

**-F(X)** Fusing (X indicates voltage)<sup>4</sup>  
**-HA** 55°C Listing (250 watt only)  
**-CXHLPX** Cord, Hook/Loop, & 20A Plug, DL only<sup>3,4</sup>  
**-CHL** 2' Exposed Cord Hook/Loop  
**-QSS** Quartz Standby, includes 150W lamp  
**-QST** Quartz Time Delay, includes 150W lamp  
**-LL** Less Lamp  
**-S** Screw Down Refractor  
**-EM** Emergency Quartz Lamp Socket  
**-FP** National Sanitation Foundation Listed

<sup>1</sup> Includes factory installed lamp.  
<sup>2</sup> Surface mounting units for mounting on concrete and steel only.  
<sup>3</sup> For cord length, replace first X with 2, 4, 6, 8, 10, or 12.  
<sup>4</sup> For voltage, replace second X with 1 - 120V, 2 - 208V, 3 - 240V, 4 - 277V, 5 - 480V, 6 - 347V.  
<sup>5</sup> EB is 120-277v, no voltage selection required  
<sup>6</sup> Polycarbonate only available with HPS

### ACCESSORIES

(order as separate part #)

Catalog Number	Description
<b>SW-WG</b>	Wireguard with safety chain

### MAX AMBIENT TEMPERATURE CHART

WATTAGE	MAX TEMP
175	55°C
200	55°C
250	40°C
320	40°C
350	40°C
400	40°C

Due to our continued efforts to improve our products, product specifications are subject to change without notice.



Hubbell Industrial Lighting • 701 Millennium Boulevard • Greenville, SC 29607 • PHONE: 864-678-1000  
For more information visit our web site: [www.hubbell-ltg.com](http://www.hubbell-ltg.com)

Industrial Lighting